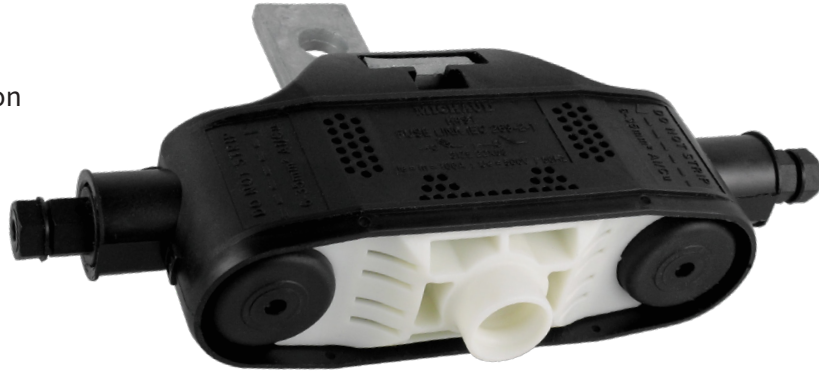


K491

- IPC FUSE SWITCH DISCONNECTOR UP TO 100A

APPLICATION

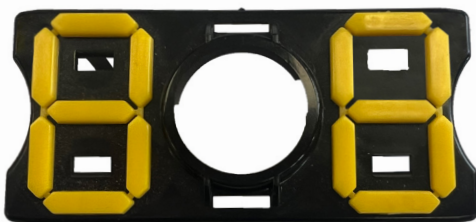
This Fuse switch disconnector is a single phase device that is normally used as a house service fuse or isolation point. It provides electrical protection to an individual customer. It is designed to receive maximum 100A 22x58 size barrel fuse cartridge (according to IEC 269-2.1). It suits aluminium or copper insulated cables from 6 up to 35mm².



FEATURES

- These connections use insulation piercing technology
- Shear head bolts for correct connection everytime
- The fuselink is accessed with a pigtail stick
- Test points on each terminal are accessible without removing fuse carrier base
- Cable range insulated Al or Cu 6-35mm²
- Continuous one piece electrical connection from cable to fuse
- Bottom entry for cable ports creates natural drip loop
- Self-supported whilst being mounted onto bracket - no need to hold while tightening
- UV Stabilised black body
- Double circlip for retention of fuse
- Captured fuse base, will stay in place even without fuselink
- Degree of protection is IP 33
- Watertight cable entry points
- Fully tested to IEC269-2-1
- Supplied standard with BRAC002 single bracket
- Proven service reliability in harsh NZ environment

IDENTIFICATION PLATE



K492 - Customer identification number plate

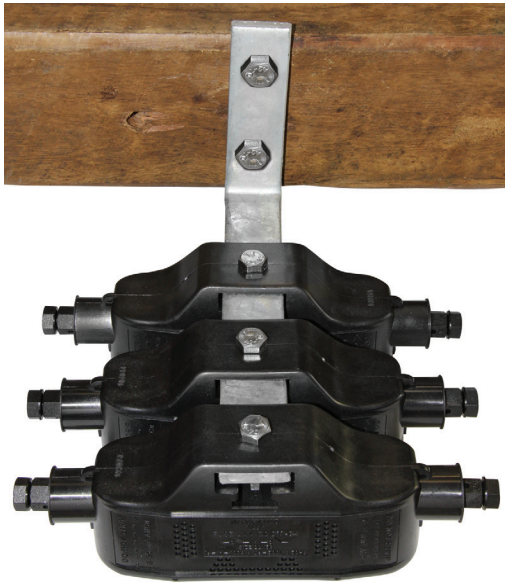


RATINGS

- Rated operational voltage Ue : 500V
- Rated insulation voltage, Ui : 1,000V
- Rated frequency : 50 up to 60Hz
- Max rated operational current, Ie : 100A

MICHAUD

BRACKETS



BRACOO2 - Holds single FSD unit



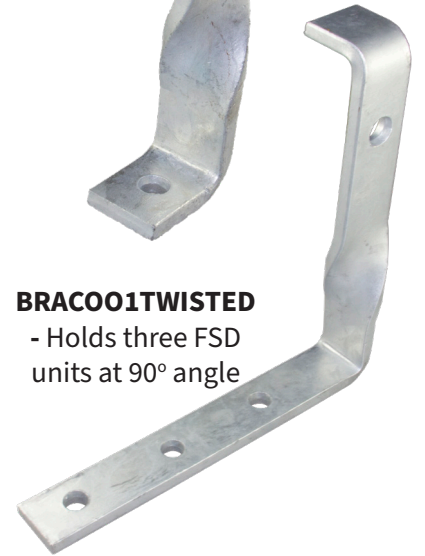
BRACOO2TWISTED - Holds single FSD unit at 90° angle



BRACOO1 - Holds three FSD units



BRACOO1TWISTED - Holds three FSD units at 90° angle



- Brackets are made of galvanised steel highly resistant to corrosion
- Fixing on pole is achieved by bolting galvanised bracket to pole/crossarm

DIMENSIONS

